

# HANGI

Hängē (with a soft g): wood for printmaking



## SHINA PLYWOOD

Shēnā, or *Tilia japonica*: a variety of basswood

This beautiful, fine-grain plywood from Hokkaido, the northern-most island of Japan, is a favorite among Japanese printmakers. Shina is harvested selectively and sustainably. The plywood is of the very highest quality, without voids, knots or blemish.

The planks are already sanded to a smooth and even thickness, ready for immediate cutting and printing. The wood is soft enough to carve very easily, and hard enough to hold a sharp edge through the printing run. There is less swelling, shrinking, or warping with this plywood than with solid planks, especially with the thicker All Shina and 5-Ply blocks. The non-toxic glue holding the plies together is so thin that it is barely perceptible as you are cutting, making this a truly exceptional product for woodblock printmaking.

If you have not used this wood before, we will be happy to send you a free sample.

### All Shina

All Shina plywood uses the same wood throughout. Many printmakers prefer it because it feels more like a solid plank as it is being cut. Of the three kinds of shina plywood, it is the easiest to cut in any direction. All Shina is  $\frac{3}{8}$ " thick, and can be cut on both sides.

### 5-Ply

5-Ply has an outer veneer of shina and a core of *seraya* or mahogany. Seraya is still easy to cut. It has a distinct straight grain that encourages the knife to cut straight lines when cutting with the grain. 5-Ply Shina is  $\frac{3}{8}$ " thick, and can be cut on both sides.

### 3-Ply

3-Ply is  $\frac{1}{4}$ " thick, has an outer veneer of shina and a seraya core. We recommend cutting 3-Ply on one side only. Because it is thin, it is possible to cut holes through the wood if you try to cut both sides. It is the least expensive of the three plywoods.

### Tips

To prevent warping, store blocks flat in a dry place. Keep away from excessive heat.

If you plan to cut both sides of a block, tape a heavy sheet of paper on the side not being cut. This will protect the surface from dents or scrapes.

### Grain

On standard sizes, the wood grain runs parallel with the longest dimension. Custom blocks can be cut with the grain running parallel with the short dimension.

### Sizes and Availability

Sizes are nominal. To maximize the number of blocks from a sheet and reduce waste, we may lose the width of the saw cut (about

" ) from a block. Exact and custom sizes can be created; call for prices. Please allow 1 week for cutting custom blocks, blocks larger than 18 x24, and large orders.

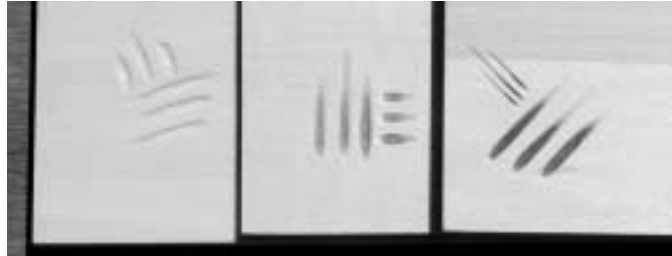
### Volume Buying

Receive a 5% discount on orders of 12 or more of the same size and kind of Shina Plywood. Different sizes and kinds cannot be combined for this discount. There are no discounts on special or custom orders.

From the top down:  
3-Ply, 5-Ply and All Shina. The 3-Ply and  
5-Ply have the darker seraya core.



From left to right:  
All Shina, 3-Ply and 5-Ply.  
Note the light colored shina  
core on the All Shina block.



Shipping weight in pounds (lb) is shown next to each block size.  
Block dimensions are given in inches.

<b>3-Ply</b> (1/4" thick, mahogany core)			
D1200	4 x 6	0.1 lb	\$0.80
D1201	6 x 8	0.2 lb	\$1.60
D1202	8 x 10	0.4 lb	\$2.65
D1203	9 x 12	0.5 lb	\$3.60
D1204	12 x 16	0.9 lb	\$6.55
D1205	14 x 18	1.2 lb	\$8.30
D1206	14 X 20	1.4 lb	\$9.20
D1207	16 x 20	1.6 lb	\$10.50
D1208	18 x 24	2.1 lb	\$14.25
D1209	20 x 24	2.3 lb	\$15.80
D1210	20 x 30	2.9 lb	\$19.75
D1211	22 x 28	3.0 lb	\$20.30

<b>5-Ply</b> (3/8" thick, mahogany core)			
D1220	4 x 6	0.1 lb	\$1.20
D1221	6 x 8	0.4 lb	\$2.35
D1222	8 x 10	0.7 lb	\$3.85
D1223	9 x 12	0.9 lb	\$5.20
D1224	12 x 16	1.6 lb	\$9.20
D1225	14 x 18	2.1 lb	\$12.05
D1226	14 x 20	2.3 lb	\$13.40
D1227	16 x 20	2.7 lb	\$15.30
D1228	18 x 24	3.6 lb	\$20.70
D1229	20 x 24	4.0 lb	\$22.95
D1230	20 x 30	5.0 lb	\$28.75
D1231	22 x 28	5.1 lb	\$29.50

<b>All Shina</b> (3/8" thick, shina core)			
D1240	4 x 6	0.1 lb	\$1.35
D1241	6 x 8	0.4 lb	\$2.60
D1242	8 x 10	0.7 lb	\$4.35
D1243	9 x 12	0.9 lb	\$5.85
D1244	12 x 16	1.6 lb	\$10.35
D1245	14 x 18	2.1 lb	\$13.60
D1246	14 x 20	2.3 lb	\$15.10
D1247	16 x 20	2.7 lb	\$17.25
D1248	18 x 24	3.6 lb	\$23.35
D1249	20 x 24	4.0 lb	\$25.85
D1250	20 x 30	5.0 lb	\$32.40
D1251	22 x 28	5.1 lb	\$33.25

**OVERSIZE 1: Minimum UPS Rate is 30lbs**

D1212	24 x 32	3.7 lb	\$25.40
D1213	24 x 36	4.2 lb	\$28.50

D1232	24 x 32	6.4 lb	\$36.30
D1233	24 x 36	7.2 lb	\$40.90

D1252	24 x 32	6.4 lb	\$42.25
D1253	24 x 36	7.2 lb	\$47.55

**OVERSIZE 2: Minimum UPS Rate is 70lbs**

D1214	30 x 40	5.8 lb	\$39.60
D1215	36 x 36	6.3 lb	\$43.90
D1216	36 x 48	8.4 lb	\$57.05

D1234	30 x 40	10.0 lb	\$56.80
D1235	36 x 36	10.8 lb	\$61.35
D1236	36 x 48	14.4 lb	\$81.75

D1254	30 x40	10.0 lb	\$66.00
D1255	36 x36	10.8 lb	\$71.30
D1256	36 x48	14.4 lb	\$95.05

D1299	<b>Shina Grab Bag</b>	20 piece mix of 3-ply, 5-ply and All Shina in sizes from 2" x 2" up to 4" x 4"	2.25 lb	\$6.00
D1300	<b>Shina Grab Box</b>	<b>Save!</b> Same as above but with 100 pieces for the price of only 80!	10 lb	\$24.00

# CHERRY BLOCKS **NEW**

*Prunus Serotina*

Straight sawn cherry is the traditional wood used in Japan for *moku hanga* (the Japanese style of printmaking). These straight sawn blocks are made of the highest quality cherry available in the U.S. The wood is straight grained and cuts very smoothly. The tiniest detail can be cut into these blocks and printed without any chance of the wood breaking down, no matter how many prints are made. It is lovely wood to cut.

### Made in the U.S.A.

A small mill in Northwestern Pennsylvania produces this furniture grade wood from local black cherry. The cherry logs are straight sawn into planks and planed. While most mills today kiln dry their lumber to save money, these planks are allowed to air-dry until they reach 20% moisture content, then very briefly kiln dried to 10%. Wood of this quality is so rare and highly prized that it is shipped all over the world, including to Japan.

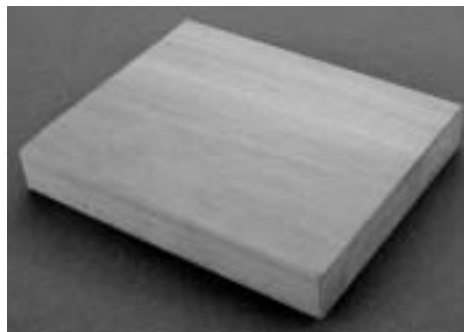
### Hand Selected and Prepared

Our supplier, a printmaker himself, travels to the mill and hand-selects the best planks for printmaking. These are cut to size, graded, and squared on all 6 sides. One side is then sanded with 150-grit sandpaper. The ends on larger blocks are treated with wax to prevent cupping, and a protective sheet is added before shipping.

### Tips on Using and Storing Cherry Blocks

Solid wood planks, even ones this thick, are more apt to warp than plywood. For this reason, it is a good idea to let the blocks rest at least two weeks before cutting, so they have a chance to adjust to the humidity in your area.

Both sides of the block can be used. You can continue sanding the smooth side to a mirror-like surface using 400 or 600 grit papers. The rougher side can also be sanded and used for another print.



### Grain

In all cases the grain runs parallel to the longest dimension. Because there is no difference in the hardness of the growth rings in this cherry, it will not print a grain pattern no matter what you do to it (rough sanding, wire brushing, etc.).

### Sizes and Prices

The 3/4" thick blocks are no smaller than 2 x 3 and no larger than 9 x 12. Also, because the supplier uses as much of the board as possible to reduce waste, all blocks will be priced based on their actual size. Let us know the minimum size you need, and we will find a block to either match that size or come as close as possible.

The prices and weights shown below are approximate. Each block will be carefully measured and the actual square inch area of that block will set the price.

Custom sizes and discounts for volume buying are not available.

Shipping weight in pounds (lb) is shown next to each block size. Block dimensions are given in inches.

<b>D1350</b> Cherry Wood blocks		<b>\$0.20 per square inch</b>
<b>Examples (price will vary depending on actual size)</b>		
2 x 3	0.2lb	<b>\$1.20</b>
4 x 6	0.6 lb	<b>\$4.80</b>
6 x 8	1.2 lb	<b>\$9.60</b>
8 x 10	2.0 lb	<b>\$16.00</b>
9 x 12	2.8 lb	<b>\$21.60</b>

## SCRATCH FOAM **NEW**

Use simple objects like a pen point or stick to make marks on this dense foam sheet. Safe for kids of any age as well as adults, since it eliminates the need for any cutting tools! The surface is so sensitive that any object can be pressed into it to make lines and textures, and tough enough to make sharp, clear prints.

No special technique is required, just draw into the surface and print. A great first step for beginning printmakers, fun and liberating for experienced printers.

Print with either oil or water-based inks.

---

**D1800** 9" x 12" sheets, 12 per box 0.5 lb **\$7.68 per box**

---

## LAUAN PLYWOOD

Lău-wăn or *Shorea negrosensis*: one of the Philippine mahoganies

Long a favorite of Japanese printmakers, Lauan has straight or nearly straight grain with pinhole size striations. Prints made from Lauan reproduce this unique straight textural pattern. Lauan is lightweight; fairly light in color (although there are variations); soft; and easy to work, especially when you are cutting with the grain. Lauan is more apt to chip than Shina, so it is not suitable for detail work. It is 3-ply and slightly less than 1/4" thick.

### Sizes and Availability

Sizes are nominal. To maximize the number of blocks from a sheet and reduce waste, we may lose the width of the saw cut (about 1/8") from a block. Exact and custom sizes can be created. Call for prices, and please allow 1

week for cutting large orders, blocks over 18 x 24, and custom blocks.

### Grain

On standard sizes, the wood grain runs parallel with the longest dimension. Custom blocks can be cut with the grain running parallel with the short dimension.

### Volume Buying

Receive a 5% discount on orders of 12 or more of the same size and kind of Lauan. Different sizes and kinds cannot be combined for this discount. There are no discounts on special or custom orders.

Shipping weight in pounds (lb) is shown next to each block size. Block dimensions are given in inches.

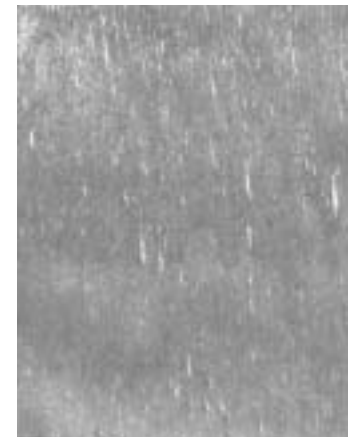
<b>D1680</b>	4 x 6	0.1 lb	<b>\$0.80</b>
<b>D1681</b>	6 x 8	0.2 lb	<b>\$1.60</b>
<b>D1682</b>	8 x 10	0.4 lb	<b>\$2.65</b>
<b>D1683</b>	9 x 12	0.5 lb	<b>\$3.60</b>
<b>D1684</b>	12 x 16	0.9 lb	<b>\$6.55</b>
<b>D1685</b>	14 x 18	1.2 lb	<b>\$8.30</b>
<b>D1686</b>	14 X 20	1.4 lb	<b>\$9.20</b>
<b>D1687</b>	16 x 20	1.6 lb	<b>\$10.50</b>
<b>D1688</b>	18 x 24	2.1 lb	<b>\$14.25</b>
<b>D1689</b>	20 x 24	2.3 lb	<b>\$15.80</b>
<b>D1690</b>	20 x 30	2.9 lb	<b>\$19.75</b>
<b>D1691</b>	22 x 28	3.0 lb	<b>\$20.30</b>

### OVERSIZE 1: Minimum UPS Rate is 30lbs

<b>D1692</b>	24 x 32	3.7 lb	<b>\$25.40</b>
<b>D1693</b>	24 x 36	4.2 lb	<b>\$28.50</b>

### OVERSIZE 2: Minimum UPS Rate is 70lbs

<b>D1694</b>	30 x 40	5.8 lb	<b>\$39.60</b>
<b>D1695</b>	36 x 36	6.3 lb	<b>\$43.90</b>
<b>D1696</b>	36 x 48	8.4 lb	<b>\$57.05</b>



Printed from a piece of Lauan to show the grain pattern